

DATA SHEET

SA57700-XX DC vibrator motor driver

Product data

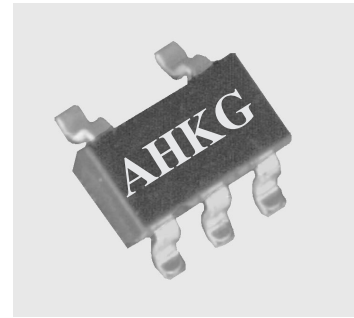
2002 Mar 25

DC vibrator motor driver

SA57700-XX

GENERAL DESCRIPTION

The SA57700 allows for a constant vibration force while operating from a -0.3 V to 12.0 V input range and delivering up to 150 mA. The Ground Current is only 80 μ A typical independent of the load. The output is turned off when input voltage drops below detection voltage at 2.1 V. To minimize battery drain, (ON = low) SA57700 supply current drops to 0.1 μ A max. Other features include thermal shutdown protection, short circuit protection. The SA57700 is available in a 5-pin SOT23 package.



FEATURES

- Compact package for small mounting area
- Good ripple rejection: 70 dB typical
- Preset output voltage from 1.2 V to 2.0 V in 0.1 V step
- High precision output voltage: $\pm 3\%$
- Output current capacity: 200 mA
- Low consumption current: 0.1 mA max. (when off)
- Low temperature drift co-efficient to V_{OUT} : ± 100 ppm/ $^{\circ}$ C

- Thermal Shutdown
- Wide Operating Temperature Range: -20 to 75° C
- Three voltage options: 1.3 , 1.5 , 1.8 V

APPLICATIONS

- Wireless Handset Vibrator Motor Drivers
- Pager Vibrator Motor Drivers

SIMPLIFIED APPLICATION DIAGRAM

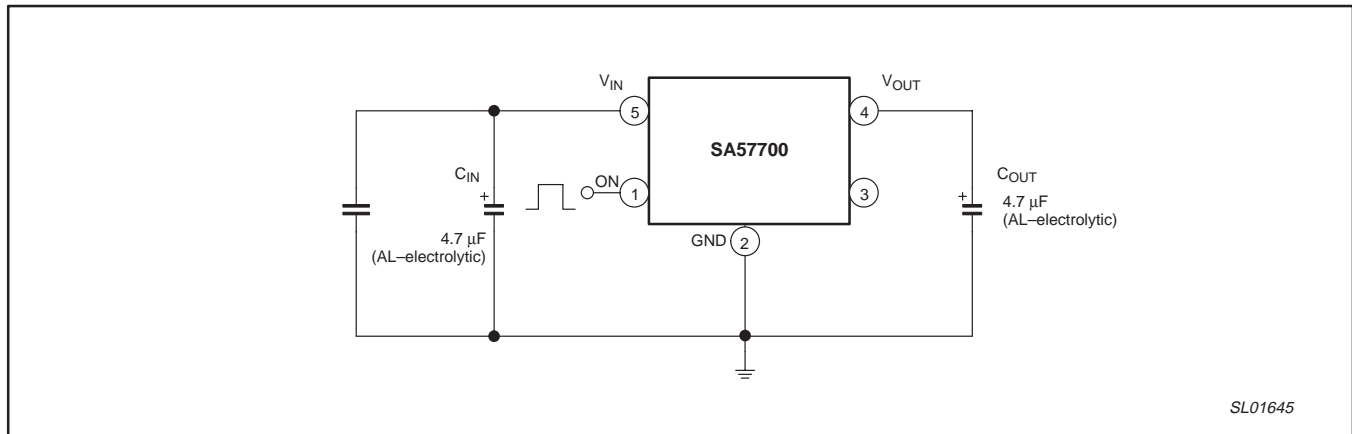


Figure 1. Simplified application diagram.

DC vibrator motor driver

SA57700-XX

ORDERING INFORMATION

TYPE NUMBER	PACKAGE		TEMPERATURE RANGE
	NAME	DESCRIPTION	
SA57700-XXD	SOT23-5	5-pin small outline plastic	-40 °C to +85 °C

NOTE:

The device has one detection voltage option, indicated by the XX on the 'Type number'.

XX	DETECT VOLTAGE (Typical)
-13	1.3 V
-15	1.5 V
-18	1.8 V

Part number marking

The package is marked with a four letter code in the first line to the right of the logo. The first three letters designate the product. The fourth letter, represented by 'x', is a date tracking code. The remaining two or three lines of characters are internal manufacturing codes.

Part number	Marking
SA57700-13	A H K x
SA57700-15	A H M x
SA57700-18	A H R x

PIN CONFIGURATION

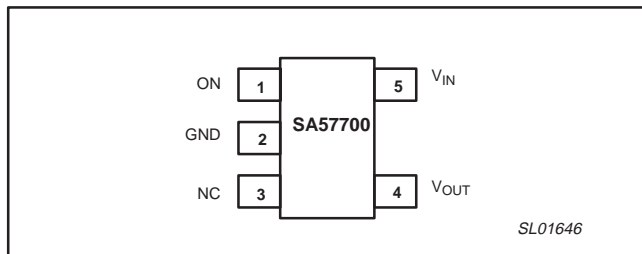


Figure 2. Pin configuration.

PIN DESCRIPTION

PIN	SYMBOL	DESCRIPTION
1	ON	Active-HIGH ON/OFF input. Apply a logic HIGH to deliver power to the load. Apply a logic LOW to disconnect the load and reduce the supply current to 0.1 μ A max.
2	GND	Ground. This pin also functions as a heatsink. Solder to large pads or the circuit board ground plane to maximize thermal dissipation.
3	NC	Not connected.
4	V _{OUT}	Regulator Output. Fixed 1.3 V and sources up to 150 mA. Bypass with 4.7 μ F, <0.2 W typical ESR capacitor to GND
5	V _{IN}	Regulator Input. Supply voltage can range up to 12 V. Bypass with 4.7 μ F to GND.

MAXIMUM RATINGS

SYMBOL	PARAMETER	MIN.	MAX.	UNIT
T _{opr}	Operating temperature	-20	+75	°C
T _{stg}	Storage temperature	-40	+125	°C
V _{CC}	Supply voltage	-0.3	+12	V
I _{OUT}	Output current		200	mA
P _D	Power dissipation		150	mW

DC vibrator motor driver

SA57700-XX

DC ELECTRICAL CHARACTERISTICST_{amb} = 25 °C, V_{CC} = 2.6 V, unless otherwise specified.

SYMBOL	PARAMETER	CONDITIONS	MIN.	TYP.	MAX.	UNIT
V _O	Output voltage	V _{IN} = 3.5 V; I _O = 30 mA	-3%	V _O	+3%	V
I _{ccq1}	No-Load input current	V _{IN} = 3.5 V; I _O = 0 mA		120	240	μA
I _{ccq2}	Input current 1 (OFF)	V _{IN} = 1.8 V; V _{ON} = 1.6 V		80	160	μA
I _{ccq3}	Input current 2 (OFF)	V _{IN} = 3.5 V; V _{ON} = 0 V			0.1	μA
ΔV ₁	Line regulation	V _{IN} = 3 V; -5 V I _O = 30 mA		10	20	mV
ΔV ₂	Load regulation	V _{IN} = 3.5 V; I _O = 0~100 mA		30	60	mV
ΔV _O /DT	V _O temperature coefficient	T _j = -20 ~+75 °C; V _{IN} = 3.5 V; I _O = 30 mA		100		ppm/ °C
RR	Ripple rejection	V _{IN} = 3.5V; f = 120 Hz V _{RIPPLE} = 1 VP-P; I _O = 30 mA	55	70		dB
V _{LDET}	V _{IN} low detector voltage	V _{IN} = H→L; I _O = 30 mA	2.0	2.1	2.2	V
V _{HDET}	V _{IN} high detector voltage	V _{IN} = L→H; I _O = 30 mA		2.6	2.8	V
ΔV _{LDET} /ΔT	V _{IN} low detector voltage temperature coefficient	T _j = -20~+75 °C; V _{IN} = H→L; I _O = 30 mA		200		ppm/ °C
V _{onh}	High threshold voltage	V _{IN} = H→L, L→H		500		mV
I _{ON}	ON terminal current	V _{IN} = 1.6 V		5	10	μA
ON _H	ON High threshold voltage		1.6		V _{IN} +0.3	V
ON _L	ON Low threshold voltage		-0.3		0.4	V

DC vibrator motor driver

SA57700-XX

TECHNICAL DESCRIPTION

ON pin

Drive ON high to provide power to the load. Drive ON low to disable power to the load and reduce the supply current to maximum 0.1 μ A. Assume V_{IN} is greater than V_{HDET} 2.6 V, when ON goes HIGH, output current rises to the current limit until V_{OUT} reaches regulation. While in regulation the output current drops to a lower value sufficient to maintain motor speed. When ON goes LOW, the regulator turns off, however, inertial energy in the motor exhibits a slow output voltage decline. The SA57700 is designed to withstand this condition with no negative effects. Connect ON terminal to V_{IN} when it is not used.

V_{IN} pin

Input voltage drops below V_{LDET} 2.1 V, which sets the output voltage stop regulating while ON input is HIGH. The consumption current flows even when output voltage is OFF due to input voltage

detection. Turn output off with the ON terminal in order to suppress consumption current completely.

Regulator stability and capacitor selection

Phase compensation is made for securing stable operation even if the load current varies. For this reason, an output capacitor with good frequency characteristics is needed. Set it as close to the circuit as possible and make the wiring as short as possible. Use a 4.7 μ F capacitor on the input and 4.7 μ F capacitor on the output of the SA57700. For a fast load transient response requires a larger output capacitor value.

Current Limit

The SA57700 includes a current limiter that monitors and controls the pass transistor's gate voltage, estimating the output current and limiting it to about 270 mA. The output can be shorted to ground for an infinite time period without damaging the part.

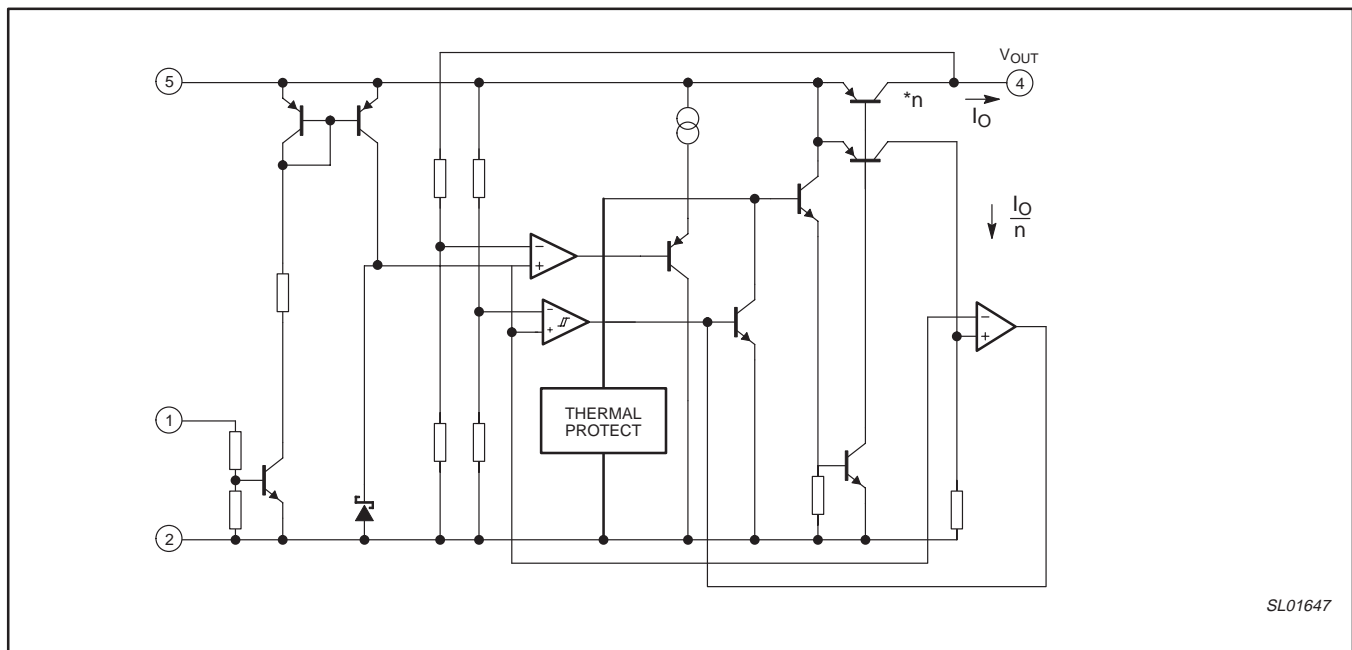


Figure 3. Functional diagram.

DC vibrator motor driver

SA57700-XX

TYPICAL PERFORMANCE CURVES

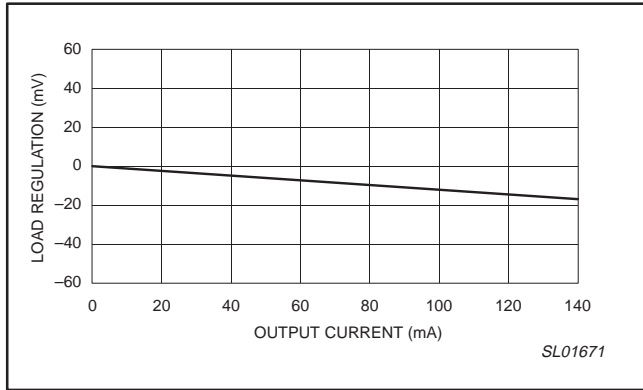


Figure 4. Load regulation.

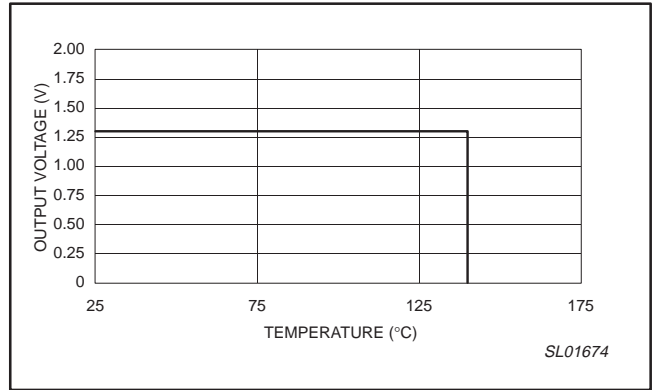


Figure 7. Thermal shutdown.

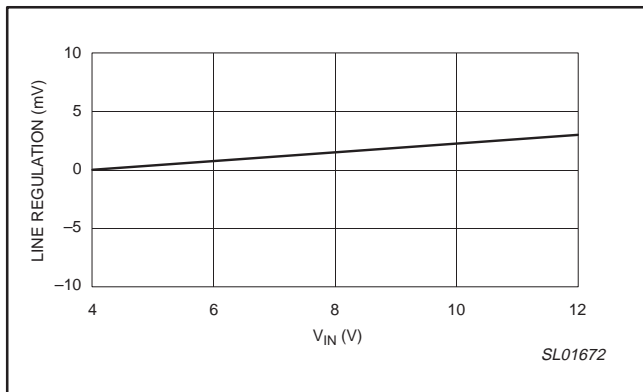


Figure 5. Line regulation.

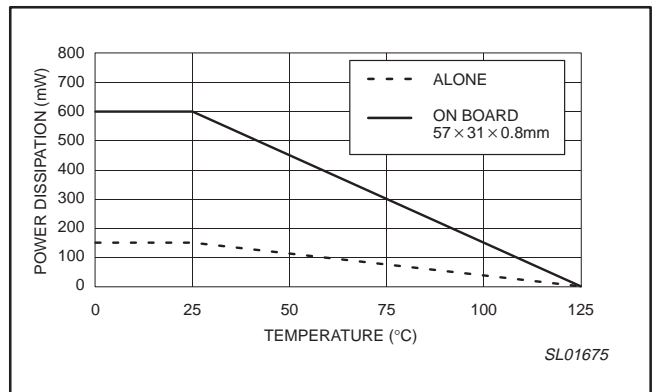


Figure 8. Power dissipation.

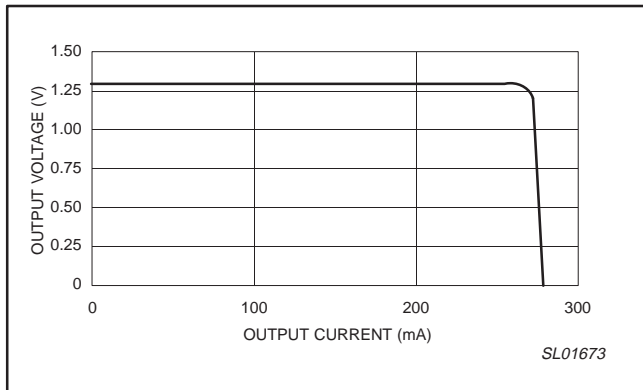


Figure 6. Current limit.

DC vibrator motor driver

SA57700-XX

Timing diagram

The timing diagram shown in Figure 9 depicts the operation of the device.

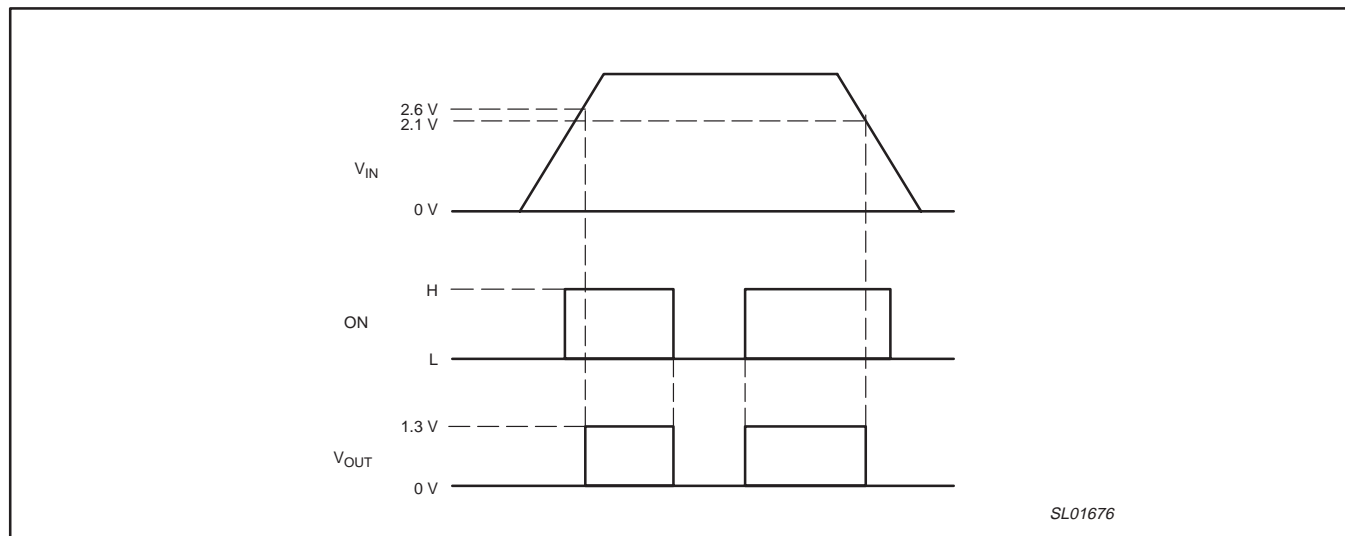


Figure 9. Timing diagram.

DC vibrator motor driver

SA57700-XX

APPLICATION INFORMATION

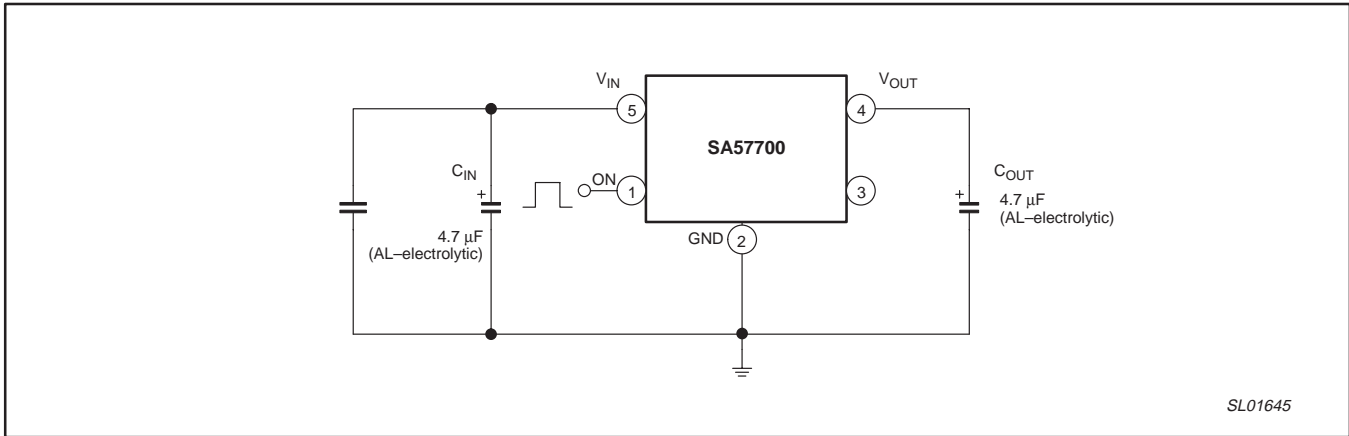


Figure 10. Typical application circuit.

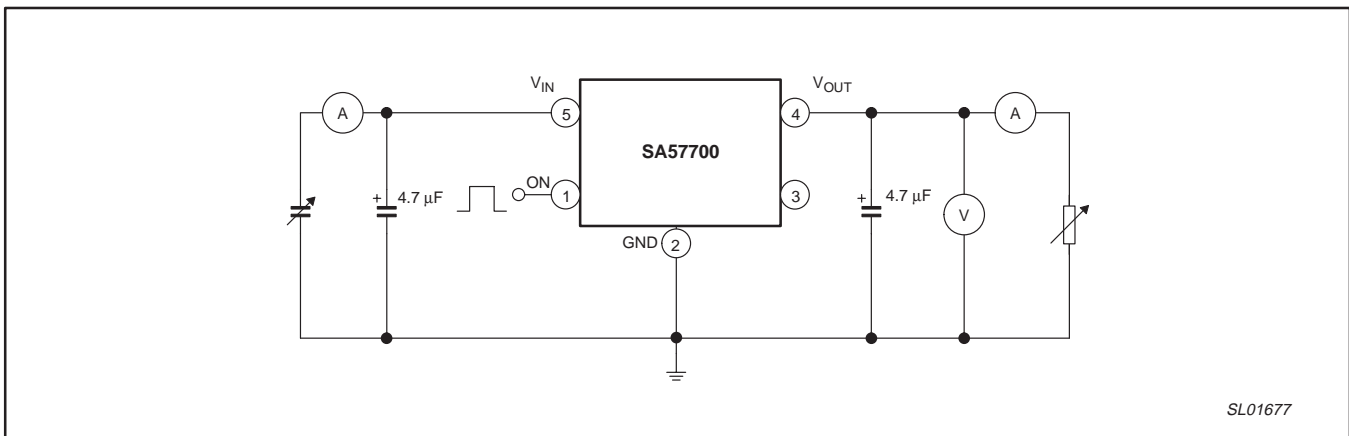


Figure 11. Test circuit.

DC vibrator motor driver

SA57700-XX

PACKING METHOD

The SA57700 is packed in reels, as shown in Figure 12.

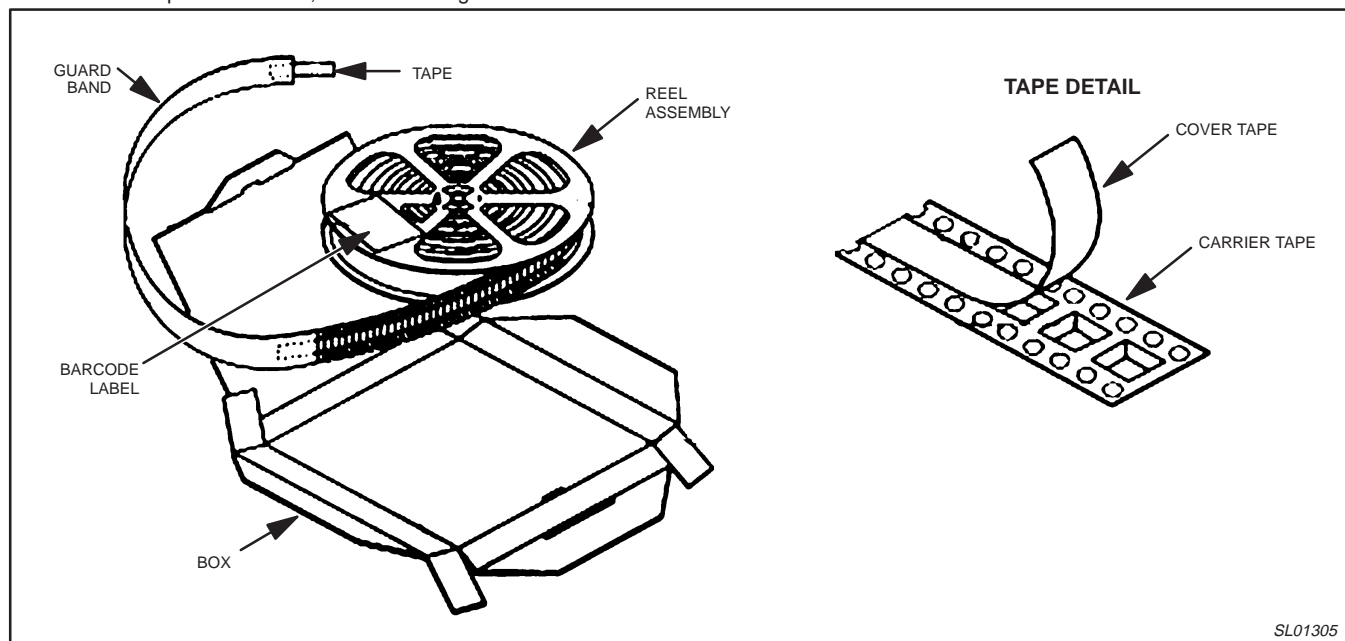


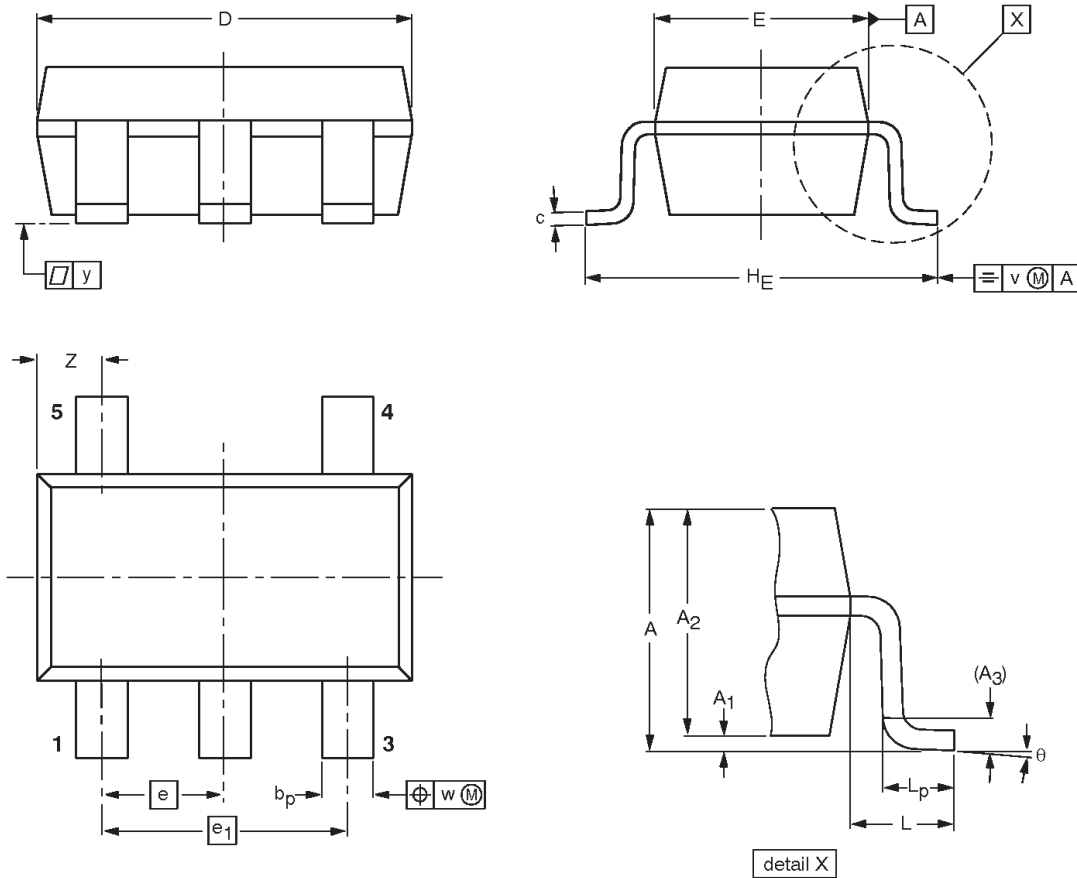
Figure 12. Tape and reel packing method.

SL01305

DC vibrator motor driver

SA57700-XX

SOT23-5: plastic small outline package; 5 leads; body width 1.5 mm



DIMENSIONS (mm are the original dimensions)

UNIT	A max.	A ₁	A ₂	A ₃	b _p	c	D ⁽¹⁾	E ⁽¹⁾	e	e ₁	H _E	L	L _p		y	θ
mm	1.35	0.05 0.15	1.2 1.0	0.025	0.55 0.41	0.22 0.08	3.00 2.70	1.70 1.50	0.95	1.90	3.00 2.60	0.60	0.55 0.35		0.1	8° 0°

Note

1. Plastic or metal protrusions of 0.25 mm maximum per side are not included.

OUTLINE VERSION	REFERENCES			
	IEC	JEDEC	EIAJ	
		MO-178		

DC vibrator motor driver

SA57700-XX

Data sheet status

Data sheet status ^[1]	Product status ^[2]	Definitions
Objective data	Development	This data sheet contains data from the objective specification for product development. Philips Semiconductors reserves the right to change the specification in any manner without notice.
Preliminary data	Qualification	This data sheet contains data from the preliminary specification. Supplementary data will be published at a later date. Philips Semiconductors reserves the right to change the specification without notice, in order to improve the design and supply the best possible product.
Product data	Production	This data sheet contains data from the product specification. Philips Semiconductors reserves the right to make changes at any time in order to improve the design, manufacturing and supply. Changes will be communicated according to the Customer Product/Process Change Notification (CPCN) procedure SNW-SQ-650A.

[1] Please consult the most recently issued data sheet before initiating or completing a design.

[2] The product status of the device(s) described in this data sheet may have changed since this data sheet was published. The latest information is available on the Internet at URL <http://www.semiconductors.philips.com>.

Definitions

Short-form specification — The data in a short-form specification is extracted from a full data sheet with the same type number and title. For detailed information see the relevant data sheet or data handbook.

Limiting values definition — Limiting values given are in accordance with the Absolute Maximum Rating System (IEC 60134). Stress above one or more of the limiting values may cause permanent damage to the device. These are stress ratings only and operation of the device at these or at any other conditions above those given in the Characteristics sections of the specification is not implied. Exposure to limiting values for extended periods may affect device reliability.

Application information — Applications that are described herein for any of these products are for illustrative purposes only. Philips Semiconductors make no representation or warranty that such applications will be suitable for the specified use without further testing or modification.

Disclaimers

Life support — These products are not designed for use in life support appliances, devices or systems where malfunction of these products can reasonably be expected to result in personal injury. Philips Semiconductors customers using or selling these products for use in such applications do so at their own risk and agree to fully indemnify Philips Semiconductors for any damages resulting from such application.

Right to make changes — Philips Semiconductors reserves the right to make changes, without notice, in the products, including circuits, standard cells, and/or software, described or contained herein in order to improve design and/or performance. Philips Semiconductors assumes no responsibility or liability for the use of any of these products, conveys no license or title under any patent, copyright, or mask work right to these products, and makes no representations or warranties that these products are free from patent, copyright, or mask work right infringement, unless otherwise specified.

Contact information

For additional information please visit
<http://www.semiconductors.philips.com>. Fax: +31 40 27 24825

© Koninklijke Philips Electronics N.V. 2002
 All rights reserved. Printed in U.S.A.

Date of release: 07-02

For sales offices addresses send e-mail to:
sales.addresses@www.semiconductors.philips.com

Document order number:

9397 750 10097

Let's make things better.